



### Best lifting performance

- High performance lifting capacity
- High maximum reach capacity

### Best Precision and user comfort

- Full hydrostatic transmission for more comfort and productivity
- Best lateral visibility
- High safety cab

### Dangerous movements cut out switch

- Compact and strong
- 5 m length
- Tilt corrector
- Smart control 4-in-1 joystick



Maximum fork height:  
32 ft 10 in



Maximum lift capacity:  
7718 lbs



# HTL 7732



Telehandler

Maximum fork height: 32 ft 10 in

Maximum lift capacity: 7718 lbs



## PERFORMANCE

Maximum lift capacity	7718 lbs
Lift capacity to full height	4410 lbs
Lift capacity at full reach	1102 lbs
Maximum fork height	32 ft 10 in
Reach at maximum fork height	7 ft 3 in
Maximum forward reach	23 ft 7 in



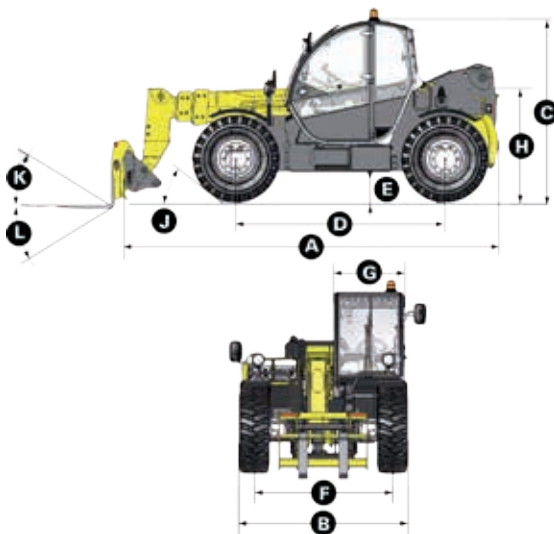
## DIMENSIONS

<b>A</b> Length	16 ft 3 in
<b>B</b> Width	7 ft 5 in
<b>C</b> Height	7 ft 1 in
<b>D</b> Wheelbase	9 ft 1 in
<b>E</b> Ground clearance	16.5 in
<b>F</b> Track width	6 ft 2 in
<b>G</b> Cab width	3 ft 2 in
<b>H</b> Height to high boom pivot	5 ft 3 in
<b>J</b> Approach angle	30°
<b>K</b> Upper rotation of forks	18°
<b>L</b> Lower rotation of forks	104°
Outside turning radius	12 ft 2 in
Weight with forks	18985 lbs
Tires type	16/70 - 24



## Engine

Engine model	PERKINS TIER III	KOHLER TIER IV FINAL
Engine capacity	268.4 in <sup>3</sup>	207.4 in <sup>3</sup>
Engine power output	70kW @ 2300rpm	55.4kW @ 2200rpm
Engine torque	392Nm @ 1400rpm	375Nm @ 1400rpm
Transmission type	Hydrostatic	
Fuel tank	31.7 gal	31.7 gal
Engine oil	1.85 gal	3.9 gal

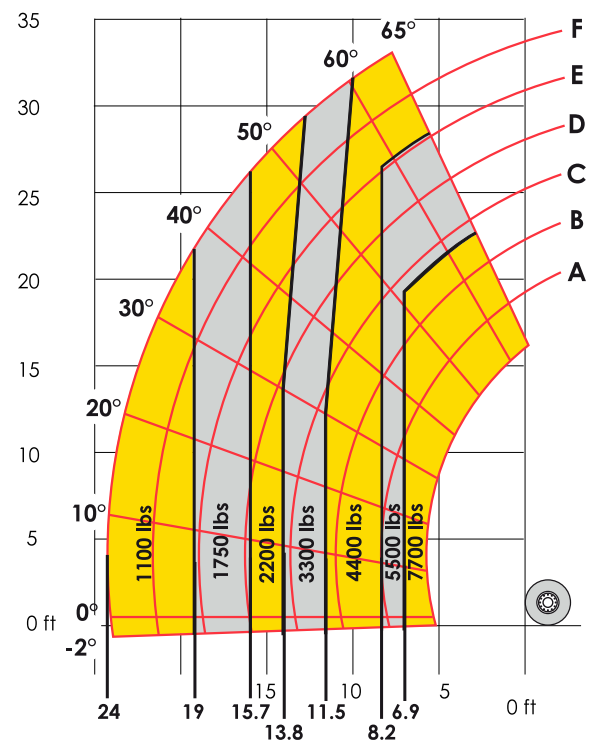


## STANDARD EQUIPMENT

- Heavy duty Hydrostatic transmission with variable capacity pump and engine
- 4 wheel drive and 4 wheel steer
- Gear equipment pump
- Proportional controls for movement of boom/telescopic arm/excavation and accessories
- Safety valves on hydraulic jacks
- Auxiliary hydraulic ports
- Overload / dangerous movements cut out switch
- Tilt corrector: +/- 10°
- ROPS/FOPS cabin with heating and ventilation
- Back-lit e-tronic dashboard

## OPTIONS AND ACCESSORIES

- 4-in-1 bucket and standard bucket
- Jib attachment and winch
- Winches
- Cold Weather Package
- Biodegradable oil
- Cold environment oil
- Hot environment oil
- Air conditioning
- Working lights
- Electrically hydraulic controls



Non-contractual document. We reserve the right to change the technical characteristics of this document without notice. 05/2016